

See discussions, stats, and author profiles for this publication at: <https://www.researchgate.net/publication/230731670>

A pulse-based diet is effective for reducing total and LDL-cholesterol in older adults

Article in *The British journal of nutrition* · August 2012

DOI: 10.1017/S0007114512000748 · Source: PubMed

CITATIONS

26

READS

135

4 authors:



Saman Abeysekara

Western AG Supply Inc..

45 PUBLICATIONS 441 CITATIONS

SEE PROFILE



Philip D Chilibeck

University of Saskatchewan

226 PUBLICATIONS 4,778 CITATIONS

SEE PROFILE



Hassanali Vatanparast

University of Saskatchewan

251 PUBLICATIONS 1,253 CITATIONS

SEE PROFILE



Gordon A Zello

University of Saskatchewan

158 PUBLICATIONS 3,000 CITATIONS

SEE PROFILE

Some of the authors of this publication are also working on these related projects:



One Health approach to improving food security and nutritional status in the context of gender/ethnic inequities in Guatemala [View project](#)



Magnetic Resonance Imaging [View project](#)

A pulse-based diet is effective for reducing total and LDL-cholesterol in older adults

Saman Abeysekara¹, Philip D. Chilibeck^{1*}, Hassanali Vatanparast² and Gordon A. Zello²

¹College of Kinesiology, University of Saskatchewan, Saskatoon, SK, Canada

²College of Pharmacy and Nutrition, University of Saskatchewan, Saskatoon, SK, Canada, S7N 5B2

(Submitted 31 August 2011 – Accepted 24 October 2011)

Abstract

Our purpose was to determine the effects of a pulse-based diet in individuals 50 years or older for reducing CVD risk factors. A total of 108 participants were randomised to receive pulse-based foods (two servings daily of beans, chickpeas, peas or lentils; about 150 g/d dry weight) or their regular diet for 2 months, followed by a washout of 1 month and a cross-over to the other diet for 2 months. Anthropometric measures, body composition and biochemical markers (i.e. serum LDL-cholesterol (LDL-C), as the primary outcome, and other lipids, glucose, insulin and C-reactive protein) were assessed before and after each diet phase. A total of eighty-seven participants (thirty males and fifty-seven females; 59.7 (SD 6.3) years, body mass 76 (SD 16) kg) completed the study. Compared with the regular diet, the pulse-based diet decreased total cholesterol by 8.3% (pulse, 4.57 (SD 0.93) to 4.11 (SD 0.91) mmol/l; regular, 4.47 (SD 0.94) to 4.39 (SD 0.97) mmol/l; $P < 0.001$) and LDL-C by 7.9% (pulse, 2.93 (SD 0.84) to 2.55 (SD 0.75) mmol/l; regular, 2.96 (SD 0.86) to 2.81 (SD 0.83) mmol/l; $P = 0.01$). In a sub-analysis of individuals with high lipid levels at baseline (twenty individuals with high cholesterol), the pulse-based diet reduced cholesterol by 6% compared with the regular diet (pulse, 5.62 (SD 0.78) to 5.26 (SD 0.68) mmol/l; regular, 5.60 (SD 0.91) to 5.57 (SD 0.85) mmol/l; $P = 0.05$). A pulse-based diet is effective for reducing total cholesterol and LDL-C in older adults and therefore reduces the risk of CVD.

Key words: Lentils: Chickpeas: Beans: Peas: Lipids: Obesity: Hyperglycaemia

Age is a major non-modifiable risk factor for CVD^(1,2), with individuals aged 50 years and older having worse lipid profiles compared with younger age groups^(3,4). Important to consider are interventions that can lower modifiable risk factors in older individuals because our population is projected to age substantially over the next 25 years due to the ageing of the baby-boomer generation⁽⁵⁾. This will result in a disproportionate increase in health care costs, especially in the area of CVD⁽⁵⁾.

Pulses (i.e. beans, peas, chickpeas and lentils) are high in many components considered beneficial for cardiovascular health, including soluble and insoluble fibre, vegetable protein, oligosaccharides, saponins, folic acid, phytosterols and other antioxidants⁽⁶⁾. Pulses have a very low glycaemic index, which results in lower blood glucose and insulin response compared with other foods⁽⁷⁾. Pulses are effective for improving lipid profile^(8–10) and glycaemic control⁽¹¹⁾. Pulse-based foods have also been reported to reduce systolic blood pressure and C-reactive protein (a marker of inflammation) in overweight and obese subjects⁽¹²⁾. Determining whether a pulse-based

diet can be effective in older individuals, as it is in younger individuals^(8,9), is important because dietary intake may have less influence on CVD risk factors in older compared with younger subjects⁽¹³⁾. A few studies of pulse diets have included individuals over the age of 50 years^(14–20), the age category most at risk for CVD^(1–4); however, no study has focused exclusively on individuals aged 50 years and older. A pulse-based diet may be an optimal intervention for improving cardiovascular risk factors since pulse consumption in North America currently is very low⁽²¹⁾.

The purpose of the present study therefore was to evaluate the effect of a pulse-based diet on risk factors for CVD, including blood lipids (with LDL-cholesterol (LDL-C) as the primary outcome), fasting glucose and insulin, inflammation, blood pressure and body composition (waist circumference, fat mass) in individuals aged 50 years and older. Based on past studies of younger participants^(8,9,11,12), we hypothesised that a pulse-based diet would reduce these risk factors for CVD in older participants.

Abbreviation: LDL-C, LDL-cholesterol.

* **Corresponding author:** Dr Philip Chilibeck, fax +1 306 966 6464, email phil.chilibeck@usask.ca

Methods

Experimental design and study protocol

This clinical trial employed a randomised single-blind cross-over design to compare a pulse-based and regular diet (Clinical Trials Government identifier no. NCT00800033). Researchers collecting and analysing the data were blinded to whether participants were on the pulse-based diet or their regular diet. Sample size was calculated as that required to show a 0.2 mmol/l decrease in LDL-C, which reduces CHD-related mortality and total events by 6%⁽²²⁾, a level considered clinically significant⁽²³⁾. We assumed a baseline LDL-C of 3.63 mmol/l with a standard deviation of 0.82, based on our previous work with participants aged 50 years and older⁽²⁴⁾. Using an α level of 0.05, a power of 80%, and assuming a correlation between repeated measures of 0.86⁽²⁴⁾, the required sample size was calculated as thirty-nine. We recruited additional participants to account for those who might drop out or be lost to follow-up and used an intent-to-treat analysis. Subjects were inactive men and women (defined as participating in moderate aerobic exercise two times or less per week), not allergic to any of the components of the pulse diet, not on medication that affects blood lipids, and aged 50 years or older. A total of 108 subjects (thirty-seven males) were randomised to receive the pulse-based diet or their regular diet for 2 months and then crossed over to receive the other diet for 2 months, separated by a 1-month 'washout'. Randomisation was carried out using a computer-generated allocation schedule using a fixed block size of four. Stratification was by sex. The allocation sequence was concealed from the research assistant enrolling and assessing participants by using central allocation (i.e. telephone). All participants were given advice on following the Canadian Physical Activity Guidelines as part of standard of care⁽²⁵⁾. Ethical approval for the study was received from the Bio-medical Research Ethics Board at the University of Saskatchewan and all subjects gave their written informed consent.

The pulse-based diet included snacks, salads, soups and meals prepared with lentils, chickpeas, beans and peas (150 g dry weight or 250 g wet weight cooked daily). The specific pulses included green lentils, red split lentils, chickpeas, yellow split peas, and pinto, fava, broad, black and kidney beans. The type of pulses incorporated into meals was rotated so that participants received an equal percentage (i.e. 25% each) of meals containing lentils, chickpeas, peas and beans. These pulses represented a mixture of varieties that are available in the food system (i.e. they came from a wide variety of sources and suppliers). A total of two servings (75 g dry weight or 125 g wet weight cooked pulses per serving) were supplied daily (i.e. lunch, dinner or snacks). This serving size is similar to the serving size recommended for legumes in the 'meat and alternatives' food group from Canada's Food Guide, which is two or three servings of legumes per d for individuals aged 51 years and older, where one serving is equal to 0.75 cups or about 123 g⁽²⁶⁾. Meals containing the different pulses were rotated. No foods were given during the control period; participants were told to follow their usual diet. The subjects were asked to keep a log of all pulse foods eaten and compliance

to the diet was determined from these logs. They had to fill out a detailed validated FFQ at baseline, and at 2, 3 and 5 months so that we could compare intake of nutrients during the pulse-diet and regular-diet phases. This FFQ is a 110-item survey designed to estimate the customary dietary intake for a wide variety of food items and nutrients in adults (Block 98.2 FFQ, Block Dietary Data Systems). The FFQ was modified for our use by the addition of foods unique to Canada. The proportions of soluble and insoluble fibre from the pulse-based meals were estimated from the *CRC Handbook of Dietary Fiber in Human Nutrition*⁽²⁷⁾.

Laboratory analyses

Blood sampling and serum separation. Sampling was performed in the morning (07.00 to 09.00 hours) by a phlebotomist after participants had fasted for 12 h. The blood was allowed to clot for at least 30 min and then spun in a centrifuge for 10 min at 3000 rpm. Then serum was stored at -80°C .

Serum assays. An LX20 Beckman Coulter analyser (Beckman Coulter Canada Inc.) was used to analyse the following components by enzymic kits: total cholesterol, LDL-C and HDL-cholesterol (EnzyChrom™ HDL and LDL/VLDL Assay Kit, EHDL-100); TAG (EnzyChrom™ TAG Assay Kit, ETGA-200); glucose (QuantiChrom™ Glucose Assay Kit, DIGL-200) (Bio-Assay Systems). Commercially available ELISA kits were used to analyse serum insulin (ALPCO™ Insulin EIA) and C-reactive protein (ALPCO™ C-Reactive Protein [hsCRP] EIA) (ALPCO Diagnostics). Samples from all of the time points for each individual were analysed in the same assay to eliminate between-assay variability. Within-assay CV ranged from 1.7 to 7.6%.

Physical data collection and measurements

BMI was obtained by dividing a subject's total body mass (kg) by the square of height (m). Waist circumference was measured at the superior border of the iliac crest. Blood pressure was measured after the participant was in a comfortable seated position for 5 min.

Dual-energy X-ray absorptiometry (Hologic Discovery) was used for the determination of whole body fat mass, percentage body fat and abdominal fat mass. Abdominal fat was determined following the protocol utilised by Svendsen *et al.*⁽²⁸⁾. In our laboratory, the precision (CV) of the abdominal fat mass is 4.7%⁽²⁹⁾. The CV for whole body fat mass from our laboratory is 3.0%⁽²⁴⁾.

Physical activity was assessed by questionnaire⁽³⁰⁾ to determine whether physical activity levels differed across diet phases, since this could have an effect on cardiovascular risk factors⁽²⁴⁾.

Participants were contacted three times per week to probe for adverse events and these were recorded according to the guidelines for good clinical practice⁽³¹⁾.

Statistical analyses

Dependent variables were measured at four time points: baseline, after the first 2-month diet, before the second 2-month diet (i.e. after the washout) and at the end of the

second 2-month diet. These variables included: body weight, BMI, total body fat, percentage fat, abdominal fat, waist circumference, blood pressure, serum TAG, total cholesterol, HDL-cholesterol, LDL-C, C-reactive protein (as an inflammatory marker), glucose and insulin.

Dependent variables were analysed by a sex (male *v.* female) × diet (pulse *v.* regular diet) × time (baseline *v.* 2 months) ANOVA with repeated measures on the last two factors. Here, and in the results section, 'baseline' refers to the beginning of each study arm. When interactions were significant, Bonferroni *post hoc* tests were performed to determine differences between pairs of means. Statistical tests were run including all participants and then including only participants who were classified as having elevated total cholesterol, LDL-C, glucose, TAG, C-reactive protein, blood pressure or waist circumference, or low HDL-cholesterol as defined by the National Cholesterol Education Program⁽²⁾. For blood pressure we also ran separate analyses for those who were taking blood pressure medication and those who were not taking blood pressure medication. For body composition (i.e. percentage fat), statistics were run for all participants and separately for those who had percentage fat greater than the normative values (as determined by dual-energy X-ray absorptiometry) for their age group⁽³²⁾. The α level was set at 0.05. All values are presented as means and standard deviations, except on graphs where error bars represent standard errors, for clarity. All analyses were carried out using Statistica 7.0 (StatSoft).

Results

A total of eighty-seven participants (thirty males and fifty-seven females; aged 59.7 (SD 6.3) years; body mass 76 (SD 16) kg; height 167 (SD 9) cm; BMI 27.5 (SD 4.5) kg/m²) completed the study (see study flow diagram; Fig. 1). Numbers reported for each measure throughout the present results vary slightly because some participants missed testing sessions or insufficient blood was available for assays on all blood measurements. Of the participants, nineteen were taking blood pressure medication during the study and three were on oral agents for control of blood glucose. Other medications and the number of participants on each included thyroid medication (*n* 6), medication for acid reflux (*n* 4), pain medication (*n* 3), antibiotics (*n* 2), cancer medications (*n* 3), medications for attention deficit disorder (*n* 2) and medication for atrial fibrillation (*n* 1). No differences between males and females in response to the different diets over time were found (i.e. there were no sex × diet × time interactions); therefore, for clarity all means are presented with males and females combined.

Dietary analyses

Mean energy and nutrient intakes at baseline and the end of each diet phase are presented in Table 1. There were no differences between the pulse-based and regular diet at baseline. At the end of the diet phases, the only variable that differed was dietary fibre, which was higher during the pulse-based diet, as

expected ($P < 0.01$). Of the 30 (SD 15) g dietary fibre consumed daily during the pulse intervention, 21 (SD 10) g were provided by the pulse-based meals. The relative amount of insoluble fibre in the total fibre content for the pulse-based meals was 69 (SD 11)%, with the remainder (31 (SD 11)%) from soluble fibre. From the dietary logs, participants consumed 74 (SD 24)% (range 2–100%) of the pulse-based meals supplied.

Serum chemistry

The pulse diet significantly decreased total cholesterol and LDL-C compared with the regular diet (diet × time $P < 0.001$ and $P = 0.01$, respectively; Table 2). When analyses were performed on participants with levels of total cholesterol or LDL-C that were 'borderline high' or greater (i.e. 5.17 mmol/l or greater for total cholesterol and 3.36 mmol/l or greater for LDL-C)⁽²⁾, the pulse-based diet decreased total cholesterol significantly more than the regular diet (diet × time $P = 0.05$; Fig. 2), whereas there was no significant difference between diets for LDL-C (Fig. 3). There were no significant differences between diets for changes in any of the other dependent variables measured from blood sampling (Table 2). Analyses with participants that had values outside of the optimal ranges for these other variables showed no differences between diets (data not shown).

Physical measures

No differences over time were found between diets for blood pressure or any of the anthropometric measures (Table 3) except with participants that had percentage fat above the normative value for their age⁽³²⁾ (*n* 73; group × time $P = 0.045$). For these participants, there was a small, but statistically significant, decrease in percentage body fat during the pulse diet (34.2 (SD 6.4)% at baseline and 33.5 (SD 6.4)% at 2 months; $P = 0.008$) with no change during the regular diet (33.5 (SD 6.3)% at baseline and 33.4 (SD 6.5)% at 2 months). There were no differences between diets in our sub-analyses of individuals with elevated blood pressure or those taking or not taking blood pressure medication (data not shown). Also, no differences in physical activity scores during the different diet phases were apparent. Physical activity scores (arbitrary units) were: 27 (SD 22), 24 (SD 21), 27 (SD 18) and 30 (SD 31) before the pulse diet, at the end of the pulse diet, before the regular diet, and at the end of the regular diet, respectively.

Adverse events

Of the participants, eight reported adverse events that were considered related to the pulse-based diet. Of these, seven participants reported one adverse event each, and one participant reported two adverse events. The adverse events were: upset stomach (*n* 4), flatulence (*n* 2), bloating (*n* 2) and diarrhoea (*n* 1). Adverse events were rated as 'mild' (*n* 6) or 'moderate' (*n* 3) in severity. No serious adverse events were related to the pulse-based diet. None of the participants withdrew from the study because of these adverse events.

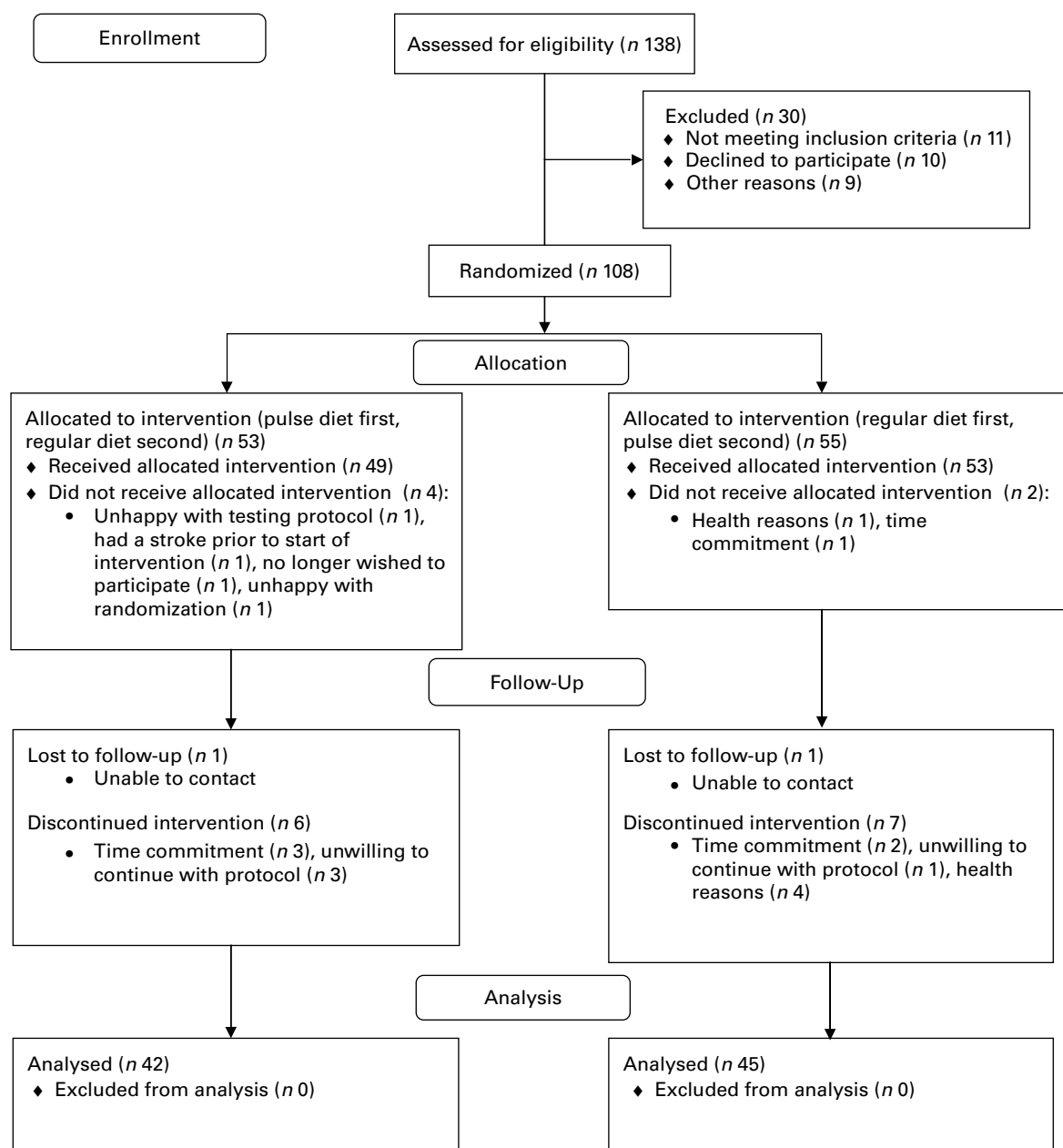


Fig. 1. Participant flow through the study.

Discussion

The most important results from the present study were that a pulse-based diet reduced total cholesterol and LDL-C in individuals aged 50 years and older, an age at which risk of CVD is elevated^(1,2). Total cholesterol was reduced by about 8.3% and LDL-C was reduced by about 7.9% on the pulse-based diet compared with the regular diet (Table 2). Total cholesterol was also reduced by 6% on the pulse-based diet in a sub-analysis of participants who had cholesterol levels that were higher than desirable⁽²⁾ at baseline (Fig. 2). These results are considered clinically significant⁽²³⁾. A reduction in total cholesterol by 8.3% is estimated to reduce risk of CHD by 17 to 25%⁽³³⁾. For participants who had

cholesterol levels classified as 'higher than desirable' (i.e. 5.17 mmol/l or higher)⁽²⁾ at baseline, the mean cholesterol level after the pulse-based diet (5.26 mmol/l; Fig. 2) was close to the level described as 'desirable' (< 5.17 mmol/l) by cholesterol guidelines⁽²⁾. The reduction of LDL-C by 0.23 mmol/l (for all participants) on the pulse-based diet compared with the regular diet (Table 2) is estimated to reduce CHD-related mortality and total events by 5 to 9%^(1,22,34). Although the reduction in LDL-C for the sub-analysis of individuals with high LDL-C levels at baseline (≥ 3.36 mmol/l)⁽²⁾ was not statistically significant (Fig. 3), the reduction may still be of clinical significance: The reduction of 0.33 mmol/l on the pulse-based diet compared with the regular diet is estimated to reduce CHD-related mortality and total events

Table 1. Nutrient intake during the pulse and regular diets (*n* 70)†
(Mean values and standard deviations)

	Pulse diet				Regular diet			
	Baseline		2 months		Baseline		2 months	
	Mean	SD	Mean	SD	Mean	SD	Mean	SD
Energy (kJ/d)	7282	2466	7587	2880	7574	2759	7198	2512
Protein (g/d)	68	23	72	30	70	26	66	23
Fat (g/d)	74	30	74	32	76	33	74	32
Carbohydrate (g/d)	204	75	222	94	215	87	200	76
Saturated fat (g/d)	21	10	21	11	22	11	21	10
Monounsaturated fat (g/d)	29	12	29	13	30	13	29	14
Polyunsaturated fat (g/d)	18	8	16	7	18	9	18	8
Cholesterol (mg/d)	185	93	168	99	197	99	189	94
Fibre (g/d)	22	9	30*	15	24	11	22	10

* Fibre content was greater at the end of the pulse diet than at all other time points (*P*<0.01).

† Micronutrients (vitamins and minerals) were not analysed.

by 7 to 13%^(1,22,34). The absolute difference of 0.33 mmol/l between diets is equal to the absolute difference between individuals from the Quebec Cardiovascular Study who developed IHD over a 5-year follow-up *v.* those who did not develop heart disease⁽³⁵⁾. For our participants with elevated LDL-C at baseline the change in LDL-C from 3.76 to 3.24 mmol/l during the pulse diet (Fig. 3) moves them from the classification of ‘borderline high’ (i.e. 3.36 mmol/l or greater) to ‘near optimal’ (i.e. less than 3.36 mmol/l) according to cholesterol guidelines⁽²⁾. This change would move many of our participants into a category of patients (i.e. ≤3.5 mmol/l) where initiation of treatment with statins would no longer be recommended according to the Canadian Cardiovascular Society guidelines⁽¹⁾.

The reductions in total cholesterol and LDL-C in our older participants during a pulse-based diet are similar to those observed in younger participants^(8,9). Younger subjects (i.e. <50 years of age) who were given mixed pulse diets (lentils, chickpeas, peas and beans) for 2–4 months reduced total cholesterol by 6 to 13%, and LDL-cholesterol by 8%^(8,9). The similar response to pulse-based diets in individuals aged over 50 years found in the present study is important because it has been suggested that diet may have less of

an influence on blood lipid levels in older compared with younger individuals⁽¹³⁾.

The present study is unique in that it is the first study to investigate the effect of a pulse-based diet on blood lipids exclusively in participants aged 50 years and older. A number of previous studies have included participants of age 50 years or older amongst their subject participants. Our findings of reduced total cholesterol and LDL-C are in agreement with most of these studies. Participants who ranged in age from 22 to 78 years given pulse diets including chickpeas, beans and/or lentils at doses ranging from 120 to 140 g/d (dry weight) or from 120 to 300 g/d (wet weight) for 3–16 weeks reduced total cholesterol by 4–19% and LDL-C by 5–24%^(9,14–18), comparable with our findings of reductions in total cholesterol and LDL-C of approximately 8%. In contrast, two additional studies that included participants aged 28–66 years given 80–440 g (wet weight) beans daily for 28–42 d over 3–7 weeks resulted in no improvement in total cholesterol or LDL levels^(36,37).

A number of components in pulses may account for their cholesterol-lowering effects⁽⁶⁾. In the present study participants consumed approximately 36% higher fibre during the pulse-based compared with the regular diet (Table 1).

Table 2. Serum measures during the pulse and regular diets
(Mean values and standard deviations)

	<i>n</i>	Pulse diet				Regular diet				Difference‡	95% CI
		Baseline		2 months		Baseline		2 months			
		Mean	SD	Mean	SD	Mean	SD	Mean	SD		
Total cholesterol (mmol/l)	80	4.57	0.93	4.11*†	0.91	4.47	0.94	4.39	0.97	-0.38	-0.59, -0.17
LDL-C (mmol/l)	80	2.93	0.84	2.55*†	0.75	2.96	0.86	2.81	0.83	-0.23	-0.43, -0.03
TAG (mmol/l)	83	0.92	0.95	0.87	0.88	0.89	0.82	0.75	0.71	0.09	-0.12, 0.29
HDL-C (mmol/l)	80	1.18	0.49	1.06	0.41	1.18	0.51	1.13	0.47	-0.07	-0.21, 0.07
C-reactive protein (nmol/l)	87	22.7	26.1	19.1	24.1	25.9	38.0	22.6	26.0	-0.3	-10.6, 10.0
Glucose (mmol/l)	76	4.37	1.40	4.39	1.36	4.47	1.92	4.17	1.51	0.32	-0.37, 1.02
Insulin (pmol/l)	57	75.7	74.0	74.8	71.0	82.6	72.2	71.3	106.9	1.5	-16.9, 37.7

LDL-C, LDL-cholesterol; HDL-C, HDL-cholesterol.

* Mean value was significantly different from that at baseline for the pulse diet (*P*<0.001).

† Mean value was significantly different from the 2-month value for the regular diet (*P*<0.01).

‡ Difference between change in pulse diet and change in regular diet.

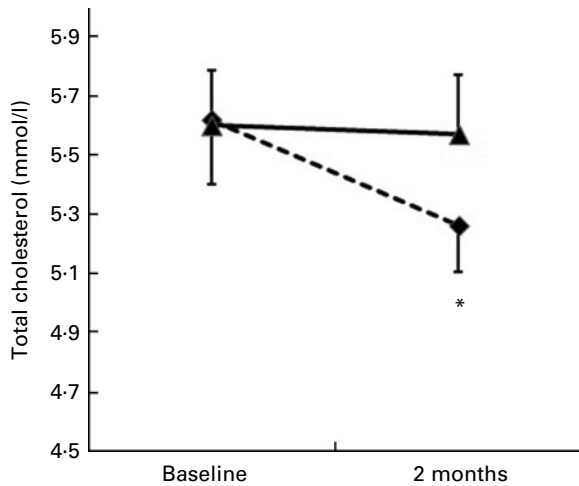


Fig. 2. Change in cholesterol levels for participants with elevated total cholesterol (≥ 5.17 mmol/l) at baseline (n 20). (---◆---), Pulse diet; (---▲---), regular diet. Values are means, with standard errors represented by vertical bars. * Mean value was significantly different from that at baseline ($P=0.05$).

Approximately 69% of the fibre supplied in the pulse diets was insoluble fibre and 31% soluble. Soluble and insoluble fibre can bind to bile acids in the intestinal lumen and prevent their reabsorption. The consequent increased hepatic production of bile acids decreases the hepatic cholesterol pool, necessitating increased cholesterol uptake from the blood, and thereby decreasing serum cholesterol levels^(6,15,38,39). Also, fermentation of soluble fibre in the colon produces SCFA which contribute to decreased cholesterol synthesis in the liver^(6,39,40).

In addition to improving total cholesterol and LDL-C levels, we hypothesised that a pulse-based diet would improve other markers of CVD risk (i.e. fasting TAG, C-reactive protein, fasting insulin and glucose, and blood pressure). We observed no benefit of the pulse-based diet on these risk factors

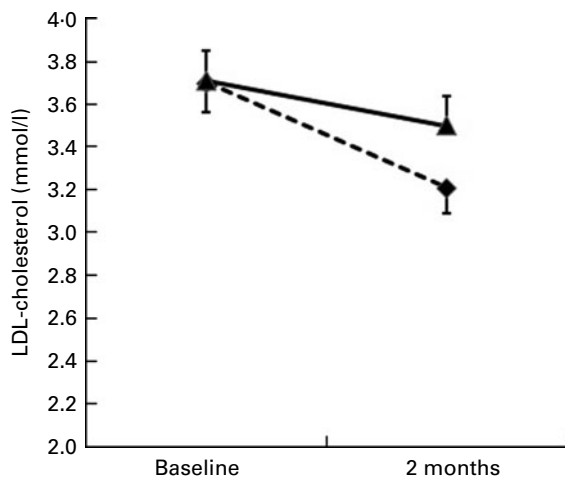


Fig. 3. Change in LDL-cholesterol levels for participants with elevated LDL-cholesterol (≥ 3.36 mmol/l) at baseline (n 27). (---◆---), Pulse diet; (---▲---), regular diet. Values are means, with standard errors represented by vertical bars.

(Tables 2 and 3). Most other studies that have included participants over the age of 50 years have also reported no significant changes in TAG after 3–8 weeks of diets containing pulses^(14–18). The only exception was the study by Jenkins *et al.*⁽⁹⁾ who found that 140 g (dry weight) daily of chickpeas, beans or lentils (similar to the present study) given over 4 months to seven hypercholesterolaemic men ranging in age from 31 to 65 years decreased TAG by 25%. Their intervention was twice as long as our intervention and this may account for the differences between studies. One previous study showed that four servings per week of 160 to 235 g (wet weight) of lentils, beans, chickpeas or peas significantly reduced C-reactive protein and blood pressure in younger (aged 36 years) obese and overweight participants over an 8-week period⁽¹²⁾, identical to the length of our diet. Their pulse diet significantly reduced body weight, whereas we observed no changes in body weight nor was weight loss expected based on the present study design (Table 3). We observed only minor changes in body composition (i.e. a small decrease in percentage fat in our subgroup of participants with above-average percentage fat). It is possible that a decrease in body weight is required to improve C-reactive protein and blood pressure. The older age of our participants may also account for lack of improvement in C-reactive protein. Levels of inflammation are chronically elevated with ageing and may be difficult to improve with dietary interventions^(24,41). Multiple interventions may be required to lower the chronic inflammation observed with ageing⁽⁴²⁾. A few studies that have included older participants have evaluated changes in C-reactive protein with half a cup to 250 g (wet weight) of beans per d over 4–8 weeks and none found significant reductions in C-reactive protein or changes in body weight^(17,18,43), similar to the results of the present study.

Sievenpiper *et al.*⁽¹¹⁾ performed a meta-analysis of eleven trials of pulses and their effect on fasting glucose and insulin⁽¹¹⁾. Expressed as a standardised mean difference, fasting blood glucose was reduced by 0.82 (a large effect size), and fasting blood insulin by 0.49 (a moderate effect size). Pulses included chickpeas, black-eyed peas and various beans at a dose of 152 g (wet weight) per d given over a mean of 6.7 weeks. The total number of participants was 253. The present study may have lacked power to detect differences in these variables. The present study included few participants with very high fasting glucose or insulin levels and, therefore, our participants may have been less responsive to the pulse-based diet. Other studies that have included participants over the age of 50 years are in agreement with the present results: 3 to 8 weeks of pulse-based diets failed to reduce fasting glucose or insulin^(14,17–20,43).

The present study had a number of limitations. Aside from providing the two servings of pulses per d, the pulse-based and control (regular) diets were not controlled. This approach would decrease the internal validity of the present study, but would increase the external validity, as it would be more applicable to everyday living. Despite the lack of dietary control, minimal differences in macronutrient intake, aside from dietary fibre, were found between the diet phases (Table 1). Another limitation was that although the present study was

Table 3. Physical measures during the pulse and regular diets (Mean values and standard deviations)

	n	Pulse diet				Regular diet				Difference*	95% CI
		Baseline		2 months		Baseline		2 months			
		Mean	SD	Mean	SD	Mean	SD	Mean	SD		
Body mass (kg)	83	75.4	15.7	74.8	15.8	75.7	16.3	75.1	16.2	0.0	-0.6, 0.7
Waist girth (cm)	82	94.3	12.3	94.2	12.8	94.7	12.2	94.8	12.6	-0.3	-1.9, 1.2
Body fat (kg)	83	24.9	8.1	24.3	8.1	24.6	8.1	24.3	8.3	-0.2	-0.6, 0.2
Abdominal fat (kg)	83	2.3	1.2	2.2	1.1	2.3	1.2	2.3	1.3	-0.1	-0.2, 0.1
Percentage body fat	83	32.8	7.1	32.3	6.9	32.4	6.9	32.2	7.1	-0.3	-0.9, 0.2
SBP (mmHg)	82	123	13	123	15	124	15	121	13	2	-1, 5
DBP (mmHg)	82	78	7	78	8	78	8	76	9	1	-1, 3

SBP, systolic blood pressure; DBP, diastolic blood pressure.

* Difference between change in pulse diet and change in regular diet.

adequately powered to detect changes in cholesterol and LDL-C for our complete set of study participants, some of the sub-analyses of participants who had elevated risk factors involved smaller numbers of participants and may have lacked statistical power. Although the overall compliance to our diet was good, with 74% of the pulse-based foods consumed, there was much variability in compliance, with a range of 2 to 100%. Not all participants therefore could tolerate the pulse-based diet. A final limitation is that the analysis of our FFQ could not partition total fibre intake into soluble and insoluble fractions (Table 1). We were only able to determine the soluble and insoluble fractions from the meals given during the pulse diet phase by hand searching the *CRC Handbook of Dietary Fiber in Human Nutrition*⁽²⁷⁾.

In conclusion, a 2-month diet containing two servings (150 g/d dry weight) of mixed pulses (lentils, chickpeas, beans and peas) daily lowers total cholesterol and LDL-C by clinically significant amounts in participants 50 years and older, an age group who are at increased risk of CVD. The pulse-based diet had no effect on other risk factors for CVD including TAG, C-reactive protein, blood pressure, abdominal fat mass, and fasting glucose and insulin. Multiple interventions may be needed to improve these latter risk factors in older adults⁽¹⁾. Future studies should focus on the long-term effectiveness and long-term compliance to a pulse-based diet.

Acknowledgements

This research was funded as part of the Pulse Innovation Project, through Canada's Agricultural Policy Framework (APF), a Federal-Provincial-Territorial initiative, and by the Saskatchewan Pulse Growers. There were no restrictions on publishing the study. H. V. was supported by a post-doctoral fellowship from the Saskatchewan Health Research Foundation.

S. A. was involved in data collection, sample analyses, food preparation and writing the manuscript, P. D. C. was involved with study planning, data analyses and writing the manuscript, H. V. was involved in data collection, body composition analyses and writing the manuscript, and G. A. Z. was involved in study and diet planning and writing the manuscript.

The authors declare no conflict of interest.

References

- Genest J, McPherson R, Frohlich J, *et al.* (2009) 2009 Canadian Cardiovascular Society/Canadian guidelines for the diagnosis and treatment of dyslipidemia and prevention of cardiovascular disease in the adult – 2009 recommendations. *Can J Cardiol* **25**, 567–579.
- Expert Panel on Detection, Evaluation, and Treatment of High Blood Cholesterol in Adults (2001) Executive summary of the third report of the National Cholesterol Education Program (NCEP) expert panel on detection, evaluation, and treatment of high blood cholesterol in adults (Adult Treatment Panel III). *JAMA* **285**, 2486–2497.
- Reeder BA, Liu L & Horlick L (1996) Selective screening for dyslipidemia in a Canadian population. *J Clin Epidemiol* **49**, 217–222.
- Reeder BA, Liu L & Horlick L (1996) Sociodemographic variation in the prevalence of cardiovascular disease. *Can J Cardiol* **12**, 271–277.
- Martini EM, Garrett N, Lindquist T, *et al.* (2007) The boomers are coming: a total cost of care model of the impact of population aging on health care costs in the United States by Major Practice Category. *Health Serv Res* **42**, 201–218.
- Chibbar RN, Ambigaipalan P & Hoover R (2010) Molecular diversity in pulse seed starch and complex carbohydrates and its role in human nutrition and health. *Cereal Chem* **87**, 342–352.
- Jenkins DJA, Wolever TM, Taylor RH, *et al.* (1981) Glycemic index of foods: a physiological basis for carbohydrate exchange. *Am J Clin Nutr* **34**, 362–366.
- Crujeiras AB, Parra D, Abete I, *et al.* (2007) A hypocaloric diet enriched in legumes specifically mitigates lipid peroxidation in obese subjects. *Free Radic Res* **41**, 498–506.
- Jenkins DJA, Wong GS, Patten R, *et al.* (1983) Leguminous seeds in the dietary management of hyperlipidemia. *Am J Clin Nutr* **38**, 567–573.
- Dumesnil JG, Turgeon J, Tremblay A, *et al.* (2001) Effect of a low-glycaemic index–low-fat–high protein diet on the atherogenic metabolic risk profile of abdominally obese men. *Br J Nutr* **86**, 557–568.
- Sievenpiper JL, Kendall CWC, Esfahani A, *et al.* (2009) Effect of non-oil-seed pulses on glycaemic control: a systematic review and meta-analysis of randomised controlled experimental trials in people with and without diabetes. *Diabetologia* **52**, 1479–1495.
- Hermesdorff HH, Zulet MA, Abete I, *et al.* (2010) A legume-based hypocaloric diet reduces proinflammatory status and

- improves metabolic features in overweight/obese subjects. *Eur J Nutr* **50**, 61–69.
13. Porrini M, Simonetti P, Testolin G, *et al.* (1991) Relation between diet composition and coronary heart disease risk factors. *J Epidemiol Community Health* **45**, 148–151.
 14. Anderson JW, Story L, Sieling B, *et al.* (1984) Hypocholesterolemic effects of oat-bran or bean intake for hypercholesterolemic men. *Am J Clin Nutr* **40**, 1146–1155.
 15. Duane WC (1997) Effects of legume consumption on serum cholesterol, biliary lipids, and sterol metabolism in humans. *J Lipid Res* **38**, 1120–1128.
 16. Pittaway JK, Ahuja KDK, Cehun M, *et al.* (2006) Dietary supplementation with chickpeas for at least 5 weeks results in small but significant reductions in serum total and low-density lipoprotein cholesterol in adult men and women. *Ann Nutr Metab* **50**, 512–518.
 17. Winham DM & Hutchins AM (2007) Baked bean consumption reduces serum cholesterol in hypercholesterolemic adults. *Nutr Res* **27**, 380–386.
 18. Winham DM, Hutchins AM & Johnston CS (2007) Pinto bean consumption reduces biomarkers for heart disease risk. *J Am Coll Nutr* **26**, 243–249.
 19. Nestel P, Cehun M & Chronopoulos A (2004) Effects of long-term consumption and single meals of chickpeas on plasma glucose, insulin, and triacylglycerol concentrations. *Am J Clin Nutr* **79**, 390–395.
 20. Pittaway JK, Ahuja KDK, Robertson IK, *et al.* (2007) Effects of a controlled diet supplemented with chickpeas on serum lipids, glucose tolerance, satiety and bowel function. *J Am Coll Nutr* **26**, 334–340.
 21. Leterme P (2002) Recommendations by health organizations for pulse consumption. *Br J Nutr* **88**, S239–S242.
 22. Gould AL, Davies GM, Alemao E, *et al.* (2007) Cholesterol reduction yields clinical benefits: meta-analysis including recent trials. *Clin Ther* **29**, 778–794.
 23. Pan A, Yu D, Demark-Wahnefried, *et al.* (2009) Meta-analysis of the effects of flaxseed interventions on blood lipids. *Am J Clin Nutr* **90**, 288–297.
 24. Cornish SM, Chilibeck PD, Paus-Jennsen L, *et al.* (2009) A randomized controlled trial of the effects of flaxseed lignan complex on metabolic syndrome composite score and bone mineral in old adults. *Appl Physiol Nutr Metab* **34**, 89–98.
 25. Warburton DE, Charleworth S, Ivey A, *et al.* (2010) A systematic review of the evidence for Canada's physical activity guidelines for adults. *Int J Behav Nutr Phys Act* **7**, 36.
 26. Health Canada (2011) Eating Well with Canada's Food Guide. <http://www.hc-sc.gc.ca/fn-an/food-guide-aliment/index-eng.php>
 27. Spiller GA (2001) *CRC Handbook of Dietary Fiber in Human Nutrition*, 3rd ed. Boca Raton, FL: CRC Press.
 28. Svendsen OL, Hassager C, Bergmann I, *et al.* (1993) Measurement of abdominal and intra-abdominal fat in postmenopausal women by dual energy X-ray absorptiometry and anthropometry: comparison with computerized tomography. *Int J Obes Relat Metab Disord* **17**, 45–51.
 29. Vatanparast H, Chilibeck PD, Cornish SM, *et al.* (2009) DXA-derived abdominal fat mass, waist circumference, and blood lipids in postmenopausal women. *Obesity (Silver Spring)* **17**, 1635–1640.
 30. Godin G & Shephard RJ (1985) A simple method to assess exercise behavior in the community. *Can J Appl Sport Sci* **10**, 141–146.
 31. World Health Organization (1995) Guidelines for Good Clinical Practice (GCP) for Trials on Pharmaceutical Products. WHO Technical Report Series, no. 850, Annex 3. <http://apps.who.int/medicinedocs/pdf/whozip13e/whozip13e.pdf>
 32. Kyle UG, Genton L, Hans D, *et al.* (2001) Age-related differences in fat-free mass, skeletal muscle, body cell mass and fat mass between 18 and 94 years. *Eur J Clin Nutr* **55**, 663–672.
 33. Manson JE, Tosteson H, Ridker PM, *et al.* (1992) The primary prevention of myocardial infarction. *N Engl J Med* **326**, 1406–1416.
 34. Grundy SM, Cleeman JI, Merz CNB, *et al.* (2004) Implications of recent clinical trials for the National Cholesterol Education Program Adult Treatment Panel II Guidelines. *Circulation* **110**, 227–239.
 35. Lemieux I, Lamarche B, Couillard C, *et al.* (2001) Total cholesterol/HDL cholesterol ratio vs. LDL cholesterol/HDL cholesterol ratio as indices of ischemic heart disease risk in men. *Arch Intern Med* **161**, 2685–2692.
 36. Cobiac L, McArthur R & Nestel PJ (1990) Can eating baked beans lower plasma cholesterol? *Eur J Clin Nutr* **44**, 819–822.
 37. MacKay S & Ball MJ (1992) Do bean and oat bran add to the effectiveness of a low-fat diet? *Eur J Clin Nutr* **46**, 641–648.
 38. Van Bennekum AM, Nguyen DV, Schulthess G, *et al.* (2005) Mechanisms of cholesterol-lowering effects of dietary insoluble fibres: relationships with intestinal and hepatic cholesterol parameters. *Br J Nutr* **94**, 331–337.
 39. Kishimoto Y, Wakabayashi S & Takeda H (1995) Hypocholesterolemic effect of dietary fiber: relation to intestinal fermentation and bile acid excretion. *J Nutr Sci Vitaminol (Tokyo)* **41**, 151–161.
 40. Wright RS, Anderson JW & Bridges SR (1990) Propionate inhibits hepatocyte lipid synthesis. *Proc Soc Exp Biol Med* **195**, 26–29.
 41. Cornish SM & Chilibeck PD (2009) α -Linolenic acid supplementation and resistance training in older adults. *Appl Physiol Nutr Metab* **34**, 49–59.
 42. Cornish SM & Chilibeck PD (2010) Multiple interventions for treating chronic inflammation in older adults: what is the best strategy? *Exerc Sport Sci Rev* **38**, 99.
 43. Hartman TJ, Albert PS, Zhang Z, *et al.* (2010) Consumption of a legume-enriched, low-glycemic index diet is associated with biomarkers of insulin resistance and inflammation among men at risk for colorectal cancer. *J Nutr* **140**, 60–67.